



Installing Amebis Control Software

System Platform and System Requirements

The Amebis Control System software runs on all Desktop versions of Microsoft Windows including Windows XP, Windows Vista, Windows 7 and Windows 8.

The Amebis Control System is built on the Microsoft .Net framework and requires at least version 4 of the .Net framework to function. Please verify the .Net framework is installed on your computer.

The .Net framework is available from the Microsoft website:

<http://www.microsoft.com/net>

Local Installation onto single Windows based PC

For installation onto a single Windows PC, the Amebis Control Software has two components:

- 1. The Amebis Control Software**
- 2. The Amebis Basestation driver.**

Download and install the Amebis Control Software for your PC from our Website:

<http://www.amebisltd.com/support/software-downloads>

Once the Amebis Control Software is fully installed and registered, then download and install the Amebis Basestation driver so that the software can communicate with the basestation.

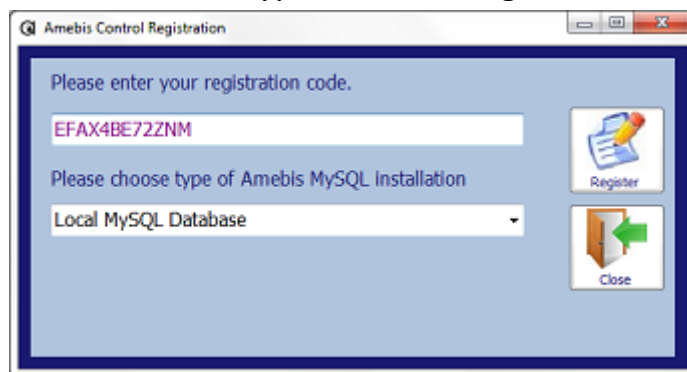
Detailed instructions below.



Installing Amebis Control Software

1. Amebis Control Software

- a. The Amebis Control Software and its database are included in the setup file from our website. Download and install this setup file onto your Windows PC.
- b. The installation will create an Amebis Control shortcut on the desktop and under program files or all programs depending on the version of Windows.
- c. Start the Amebis Control Software. On initial installation the software will ask you to input the **software licence registration key** that you received from Amebis Ltd. Choose 'Local MySQL Database' as the network type and click Register.



The software will then ask to user to install the Amebis MySQL database for use with the basestation and software. Once complete, the software will close.

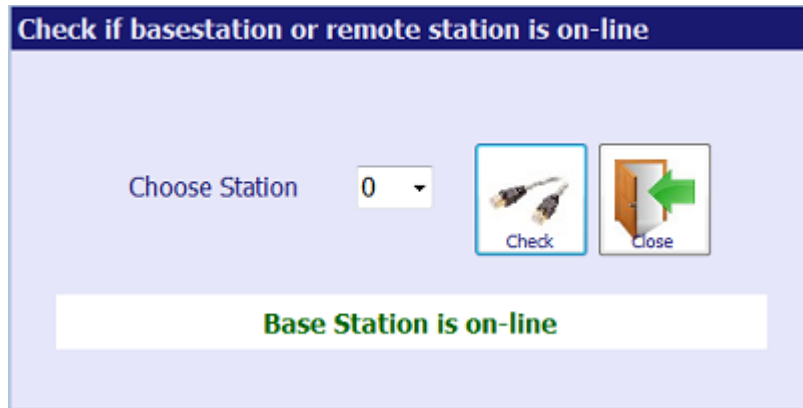
- d. Re-open the Amebis Control software and after accepting the EULA, login with the username/password: admin/admin

2. Amebis Basestation Driver

- a. Download and install the Basestation driver from our website.
- b. Connect the basestation to the PC using the supplied USB cable.
- c. Open the Amebis Control software and log in. Click **Check Station** and ensure the number 0 or 1 is chosen in the dropdown list. Click Check, a message should be displayed that Basestation is on-line.



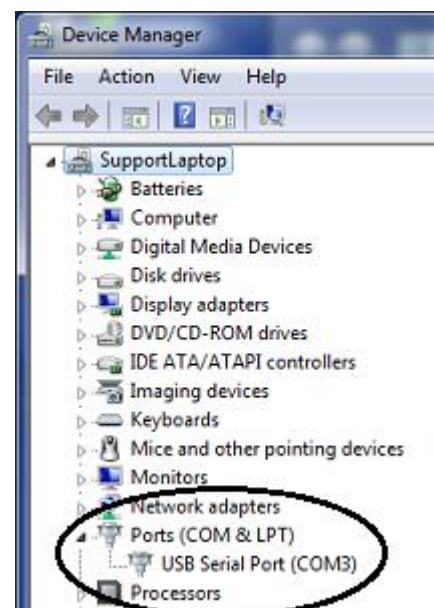
Installing Amebis Control Software



- d. If the message reports that the Basestation is off-line, please proceed to section 3 for troubleshooting the communication.

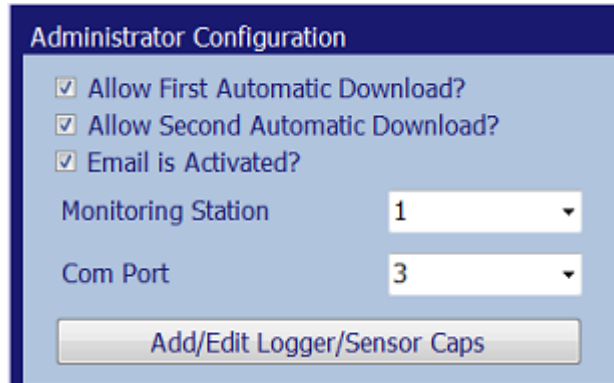
3. Basestation Communication

- a. If the 'Check Station' feature is reporting that the Basestation is off-line, please check that the software is communicating on the correct USB serial port.
- b. Please ensure that the Basestation is plugged into the Windows PC with the USB cable provided.
- c. Open the Device Manager from the Windows Control Panel.
- d. The Device Manager should show a USB Serial Port and specify a COM port. In the example here, the Basestation is using COM3 which is the default.
- e. The Amebis Control Software should be set to the same COM port as the Basestation is using. Go to Setting > Configuration in the Amebis Control Software. This will show the COM port that the software is using. See example below where COM port is set to 3.





Installing Amebis Control Software



- f. If this does not match the COM port specified in your Device Manager, please adjust it so they are the same.
- g. Re-check your Basestation communication with the 'Check Station' feature. A message should be displayed that Basestation On-Line.

The Software should now be ready for use. For support, please email: support@amebisltd.com

Networked Version of Amebis Control Software (One Amebis MySQL Database and many Amebis Control Software PC clients)

Installing the networked version of the Amebis Control Software is a 3 step process as the customer must decide where the central Amebis Control MySQL Database will reside.

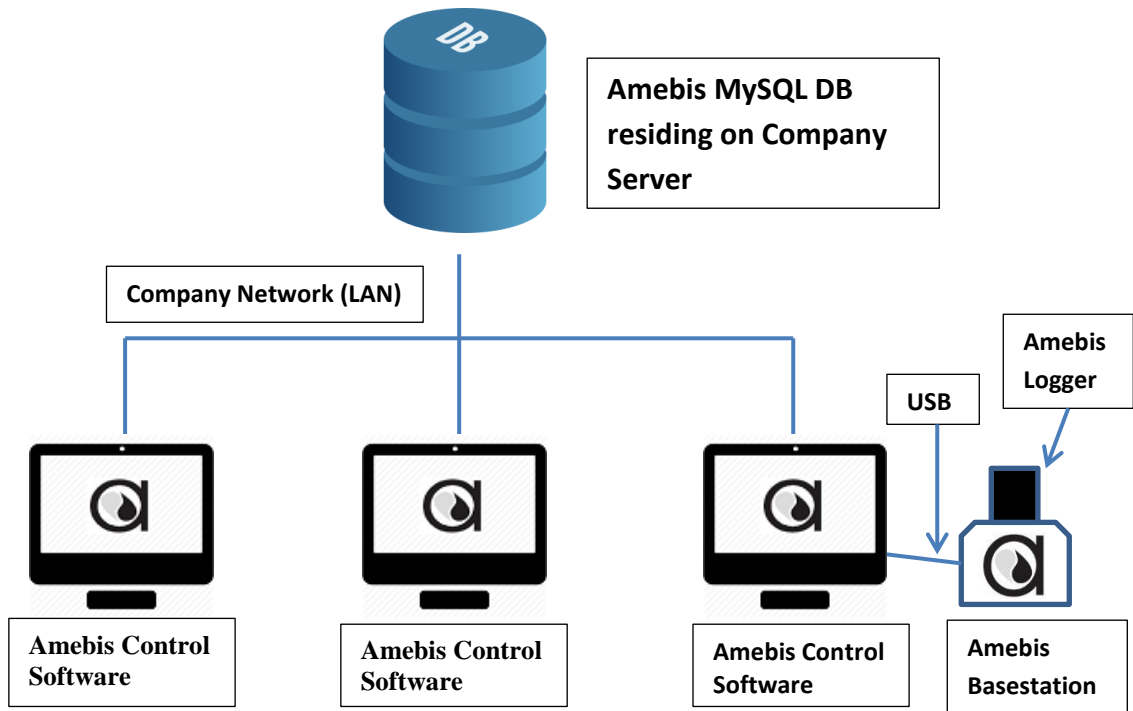
The Amebis Control MySQL Database can either reside within an existing company's MySQL Server, or on a client PC that will act as the Amebis Control MySQL Server. Installation overview diagrams below.

Please contact Amebis for a separate Amebis MySQL database setup file and installation guidance at: support@amebisltd.com

amebis

Installing Amebis Control Software

Amebis Database on Company Server



Windows PC as Amebis Server

